

# Crossways Community

## Time to focus

Newsletter Spring 2009

Crossways Community 8 Culverden Park Road Tunbridge Wells  
Kent TN4 9QX  
Phone: 01892 529321

[www.crosswayscommunity.org.uk](http://www.crosswayscommunity.org.uk)  
[number8@crosswayscommunity.org.uk](mailto:number8@crosswayscommunity.org.uk)

### INSIDE THIS ISSUE

- Martin's  
Introduction**
- A tribute to Irene**
- Crossways' new  
admin block**
- Gardening at the  
Care Home**
- Staff party**
- News from  
Culverdale**
- Our new Staff  
Member**
- Directors' news**
- For your diary—  
Coffee Morning  
and Thanksgiving  
Service**

### *He is risen*

On Easter Monday Ann, my wife, and I were returning from an afternoon out and we popped into one of our favourite garden centres at Whych Cross near to Tunbridge Wells. Imagine our joy to see a large blackboard with spring flowers beautifully arranged around it proclaiming and celebrating the resurrection of the Lord Jesus. The board and flowers were not tucked away in a corner but by the door that everyone had to go through.

*“... we can see a way through by God's grace and strength”*

We're told in the Gospels and Book of Acts that Jesus first appeared to a few and then to many. There was nothing secret about his coming to life again; so what does this mean for us, and indeed for everyone? Each of us will have our own views on this but I think essentially it speaks of victory, hope and joy.

Victory in so far as if physical death can be overcome, then all other forms of death—those things in our lives that make us feel defeated, depressed and less than human—can also be overcome. We are not talking

about a cheap artificial *triumphalism* but an awareness and hopeful experience that, in the very depths of life, we can see a way through by God's grace and strength.

The hope and joy come when we begin to appreciate that God the Holy Spirit was sent to be with us as we journey through life. Amid the ups and downs of life (and at Crossways we see many of both) hope begins to grow as we become aware that we do not have to struggle to do everything ourselves; the Holy Spirit working through the lives of those around us reminds us that he has put people alongside to walk with us on our life's journey. The joy comes when we begin to relax and enjoy that company and to value the presence of God in the people that he surrounds us with.

We have experienced some difficult times recently at Crossways but just like new shoots from a fallen tree, a new awareness has come that the living Lord is sufficient for everything that affects our lives.

*Martin Granger*

### *Irene Neel*

I have been given the privilege of writing a short piece about Irene, who passed away at the end of February this year.

There are hardly any appropriate words which describe the enormous loss to us all, and pages could be written to describe a dear friend and colleague and the many things that Irene added to the work of Crossways and the lives of those she touched.

Irene's influence was tremendous. Whether organising an event, stocking the Home, or making Crossways clean and inviting, Irene could be depended upon to bring the very highest standard. She could be relied on for her counsel, her sensitive concern and her honest responses, all of which Crossways will greatly miss.

Jesus asks us to show love and give support to those in need, something that Irene certainly put into practice at Crossways—the Crossways which she described as her church. Our thoughts and prayers continue to be with John and the family.

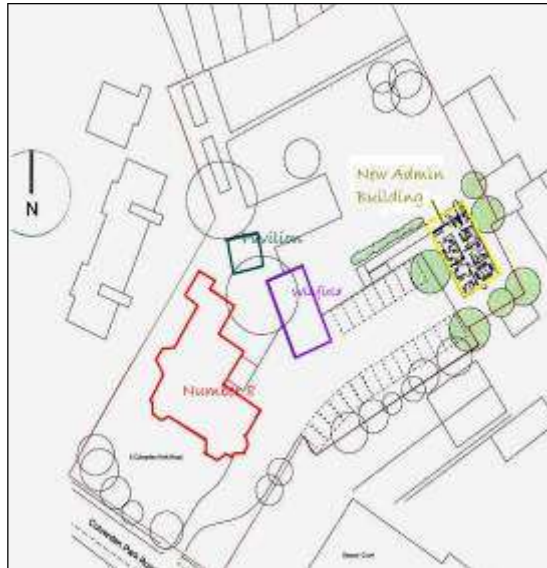
*Peter Cornford*

## Crossways' New Admin Department

As a sign of the growth time we're in, Crossways is planning to build a new administration building in the grounds of Number 8.

The plan is that we will combine:

- The current admin staff in the Pavilion;
- A new office for John as Chief Executive (Martin's office is currently a small room in the Care Home);
- A new meeting room (so that we don't have to deprive the residents of the chapel and lounges);
- An overflow office for staff at Number 8 or Culverdale;
- A base for Kathy for her work at Bethel.



The benefit will be that, apart from freeing up rooms for the residents, projects which aren't about providing residential accommodation can be based there, such as Mental Health Awareness.

The Pavilion, the current base of the admin staff, could be used as a staff social room at lunchtimes, rather than staff using the main office.

At the moment, we're having plans drawn up before we go for planning permission. Initial estimates are about £250,000 but we hope that, with the current recession, this price might be lower. The estimated timescale is that we will have detailed plans from the architect by the end of May and planning permission through in August. If all goes well, building will be completed this year.

*Steve Howcroft*

## Gardening at Number 8

*"Others, like seed sown on good soil, hear the word, accept it and produce a good crop—thirty, sixty or even a hundred times what was sown."  
(Mark 4: 20)*

Last year we started a Gardening Group. Residents began cultivating their own little allotment and small successes were achieved. However, we struggled to cultivate seeds in the inclement weather. It was therefore with great excitement that this Spring we gained a potting shed and greenhouse, thanks to a grant received from Kent County Council. We have great plans for the seasons ahead and hope that we can start the journey to making Crossways self-sufficient, at least in the summer months.

We are also fortunate to have a new gardener, Rick, who has repaired the raised beds and mows the lawns and tidies the beds. He is also at hand to give residents help in planting if they need it.

The Gardening Group meets once a week, enjoying the sunshine and companionship, but also giving residents a sense of ownership of their own plot and a real sense of achievement when small seeds develop into full-grown crops to be enjoyed for supper!

*Sarah Weller*

## Staff Party

Earlier this year a party was organised for staff and their partners from both Crossways houses plus Directors—held at Palio's restaurant in town. As you can see from the photo, the theme was hats or wigs, and the inventiveness of all those who came was very impressive!



However, prizes had to be rationed, and the prize for best hair went to Ian Swaffer (right of picture), and for best hat to Ivan Theobald (not pictured) who had gone to great lengths to create a masterpiece from cereal boxes! A wonderful spread was laid on for us by Palio's, and a good time was had by all.

## ***News from Culverdale***

Culverdale was a hive of activity in the Autumn when decorators moved in to paint the corridors and doors on the ground floor. When they left, the house felt so much brighter and fresher.

In recent years residents and staff have gone out for a Christmas tea party and last year this was held at Burrswood Healing Centre in Groombridge. We were provided with lovely Christmas fare. Gifts which we had taken with us were distributed and everyone who attended had a very enjoyable time.

Recently two evening outings have been organised to the Bowlplex followed by a meal—this has meant that residents who work or have other commitments during the day can join us and enjoy the fun of a social occasion.

At the end of February we were all shocked and deeply saddened by the loss of Irene Neel who worked at Number 8 for a number of years—we are keeping John and his family in our thoughts and prayers.

As we look to the future, we are trusting in God's direction for Culverdale and for His blessing on all those who live and work here.

*Di Webber*

## ***New staff member Moeena Winsor***

My name is Moeena and I have just completed my second week at Crossways as a Mental Health Worker. It has been a really interesting start, meeting and getting to know many different people. Although I have worked within the care sector for seventeen years, working with a Christian organisation is something special. It has been like belonging to a fellowship, with everyone being kind and helpful. I worship at St Swithun's, the large Parish Church in my home town of East Grinstead. I have a grown up son, Dominic who lives in Bristol, and a daughter Nathalie, who lives in East Grinstead with her husband Simon.



## ***New Directors***

You will be aware that for some time we have been looking for a new Chair of Directors following Alan Harvey stepping down from the position last November. Well, I am delighted to announce that Stefanie Tegelaars, who has been a Crossways Director since 2004, will be our new Chair of Directors. She has a good knowledge of mental health issues, a compassion for those who experience poor mental health and a strong belief that God can meet people at their point of need. We do praise God for her willingness to undertake this role.



*Stefanie Tegelaars*

We are also delighted to announce that Katherine Rose and Mary Tuckwell have joined the Board of Directors. Katherine has been a friend of Crossways for many years; for a time she worked at Number 8 and currently she is working as a senior manager with Social Services. Mary brings many skills and abilities to Crossways along with a heart for vulnerable people. In the past year we have had four new directors join the Crossways Community Council, I have to say bringing the average age of members down considerably! As they join those Directors who have faithfully served the organisation for many years, I believe God is preparing us for an exciting new era of growth and development, touching the lives of many people who we have been unable to reach out to in the past.

*Martin*

## Supporting the work of Crossways Community

Crossways Community is very dependent on the support of our friends. We greatly appreciate the help that many people give us in our work with people with mental health difficulties. If you feel you can help us or continue to help us in prayer, practically, financially or with your time, please indicate this below. All help, however large or small, is valued.

I would like to join the 'Friends of Crossways' and receive periodic updates for prayer and news of events.	(Tick)	I would like to go on the Crossways Mailing List and receive the twice-yearly newsletter	(Tick)
---	--------	--	--------

I am interested in helping out by:  
 .....  
 .....

Yes, I will support Crossways Community in prayer.	
--	--

Yes, I will support Crossways Community and enclose my cheque for:	£
--	---

Please indicate whether you wish your cheque to go towards the:

General Fund		Restoration	
--------------	--	-------------	--

(Any surplus money will go towards the General Fund unless you tick this box)

Please contact us on 01892 540843 if you would like to make a regular gift and receive a Standing Order form.

**Gift Aid**  
 If you are a UK taxpayer, you can make your donation even more generous by completing the Declaration below. **You must pay an amount of Income Tax and/or Capital Gains Tax at least equal to the tax that the Crossways Community reclaims on your donations in the appropriate tax year. (currently 25p for each £1 you give). We will claim any Transitional Relief (currently 3p for each £1) that also may be due.**

Signed..... Date .....

NAME: .....  
 ADDRESS: .....  
 .....  
 .....

**ALL ARE WELCOME TO OUR  
Coffee Morning  
 on Saturday 6th June 2009 at St John's Church, St  
 John's Road, Tunbridge Wells**

**10.00am—12.30pm**

**If you live locally and can provide any cakes, preserves,  
 plants or craft items for sale, we will be most grateful.**

## Time for Change

**We especially invite you to join us on  
 Saturday 10th October  
 2.30pm at St John's Church, Tunbridge Wells  
 for the Crossways Thanksgiving Service  
 when we will be commissioning John Neel as our  
 new Chief Executive**

